

Viola

from "Cassation"

K.63

Mozart

Menuetto ♩ = 100

①

②

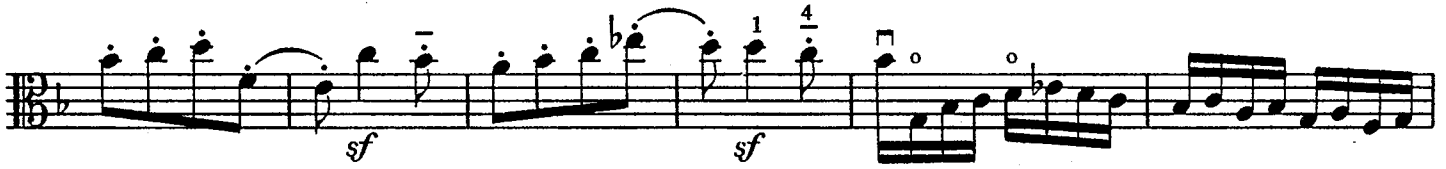
K.63
Mozart

viola

Op. 64, No. 5
Haydn

3

Vivace ♩ = 108



Viola

(String Trio)
Op. 9, No. 3
2nd movmt
Beethoven

4

Adagio con espressione

$\text{♩} = 56$

A single musical staff in bass clef with a key signature of two flats (B-flat and E-flat). It contains a short melodic phrase with a slur over the notes and a fermata over the final note.

A musical staff in bass clef with a key signature of two flats. It features a complex melodic line with multiple slurs and fingerings (1, 2, 3, 0, 1). The phrase ends with a *cresc.* marking.

A musical staff in bass clef with a key signature of two flats. It contains a melodic line with slurs and dynamics markings: *fp*, *fp*, and *f*. A *V* marking is present above the staff.

A musical staff in bass clef with a key signature of two flats. It features a melodic line with slurs and dynamics markings: *ff* and *sf*. A *N* marking is present above the staff.

A musical staff in bass clef with a key signature of two flats. It contains a melodic line with slurs and repeated *sf* dynamics markings.

A musical staff in bass clef with a key signature of two flats. It features a melodic line with slurs and dynamics markings: *sf*, *f*, *sf*, *sf*, *sf*, *sf*, *sf*, and *ff*. A *V* marking is present above the staff.